





**DESIGNER**  
Candice Olson

**COLOR**  
Benjamin Moore  
Nimbus Gray #2131-50

# FAVORITES



**GARDEN**  
Sanssouci Park, Potsdam

**ACCESSORY**  
Throw pillows for  
color, texture & attitude



**CHAIR**  
Tom Dixon's  
Wingback Chair



**GADGET**  
Polaroid Snap Instant Camera



**MAGAZINE**  
Vanity Fair



**CHOCOLATE**  
SOMA Truffles



**BOOK**  
The Handmaid's Tale  
Margaret Atwood



**CITY**  
Paris



1936 Mercedes Benz 540K

**FLOWER**  
Peony



**HOTEL**  
Hôtel de Crillon, Paris



For her third collection with Kravet, Candice Olson introduces a stunning four-book set of lifestyle fabrics, coordinating showroom-only wallpaper and first decorative trim collection in her celebrated signature style: relaxed and livable with a dose of glam. Reflecting a feeling of carefree, everyday elegance and livable luxury, the collection presents a cohesive fusion of contrasts – contemporary yet comfortable, casual but sophisticated, classic yet current, and timeless with a touch of the unexpected.

Metallic accents and hints of golden glamour are mixed into a palette inspired by natural elements like the sea, sky and stone. The variety of luxury weaves, textures, prints, sheers, embroideries and velvets are offered in soft color palettes of neutrals, mineral greens, gray taupes and smoky blues. Contemporary takes on classic patterns like damasks, paisleys and architectural inspirations introduce fresh, modern designs. Subtle and sophisticated on their own or harmonious when mixed and mingled, the versatile designs create tranquil and elegant interiors.

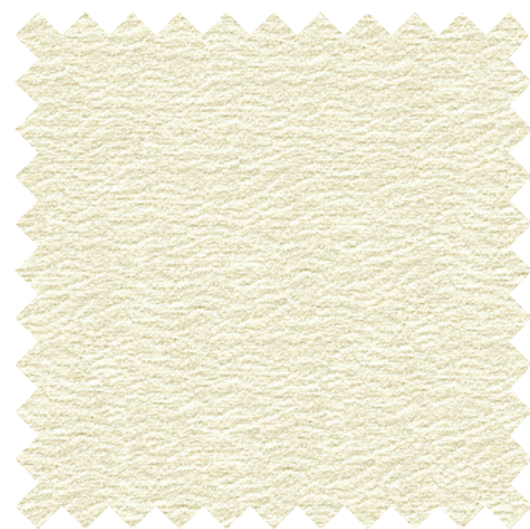
Designers can shop Candice's room designs on CuratedKravet.com, which include furniture, pillows, lighting, wall décor, carpet and accessories styled and selected by Candice.



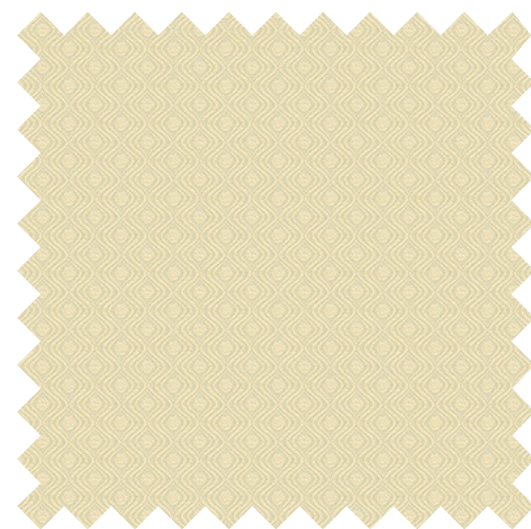
*“When it comes to palettes, patterns and textures there is no one that has had a bigger impact on my work than the greatest architect, designer and artist of all time – Mother Nature!”*



34095 - 16



34122 - 1



34116 - 16



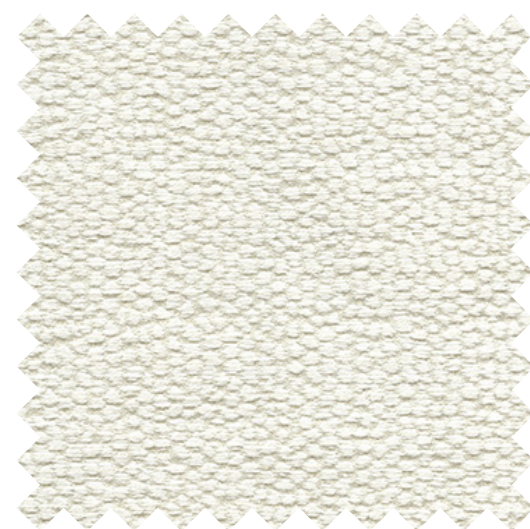
34125 - 130



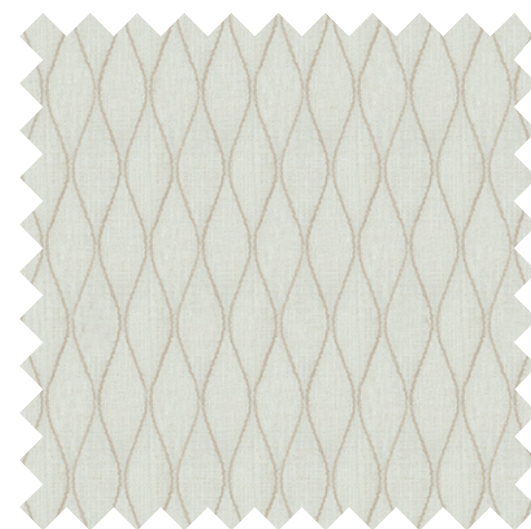
34163 - 1516



34146 - 16



34142 - 1



34189 - 1116



ARCHES - 1611



MARBLEWORK - 416



T30743 - 611



T30745 - 16



T30745 - 113



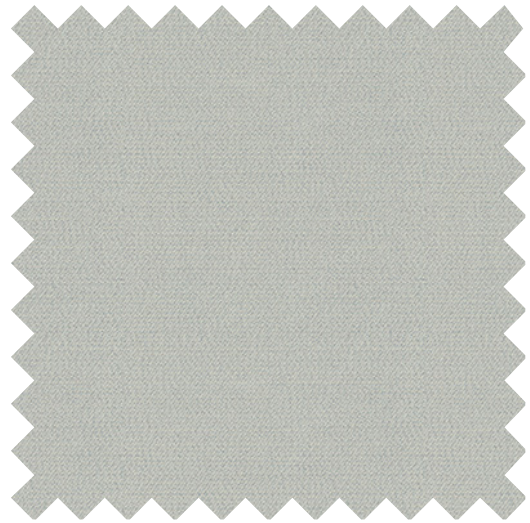
T30745 - 15



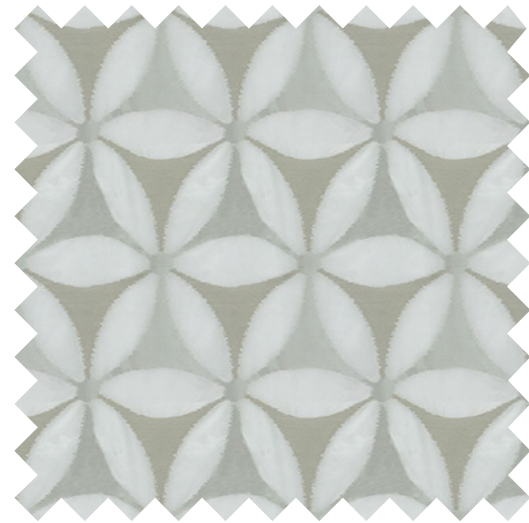
T30743 - 811



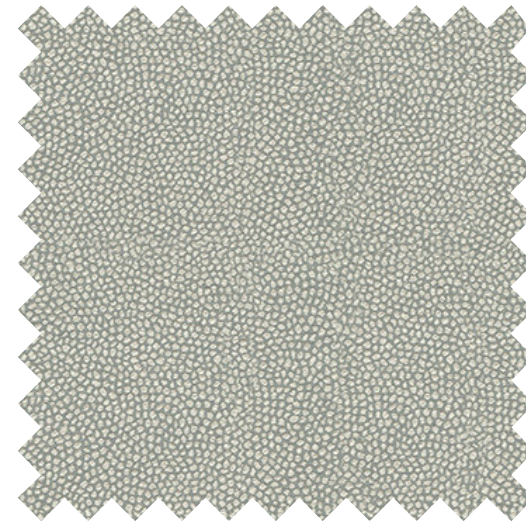
*“Contrast adds drama and excitement, and this moody, sophisticated space features some of my favorite fabric combinations from my latest collection.”*



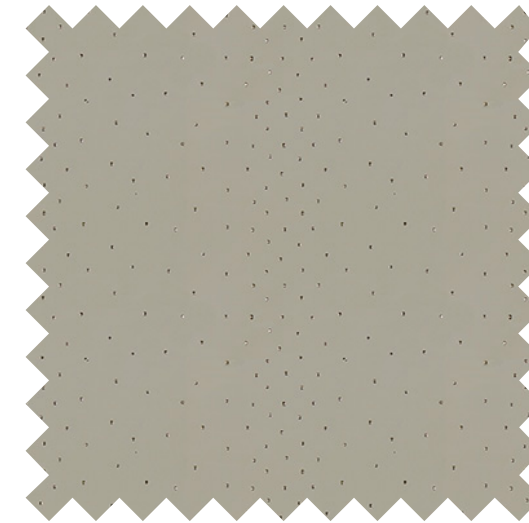
29582 - 21



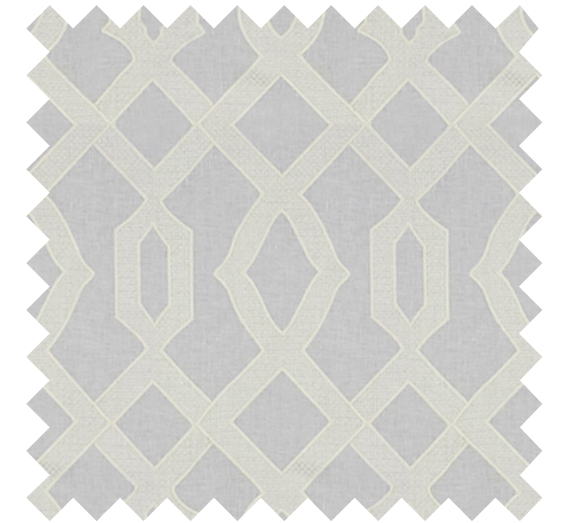
4181 - 1121



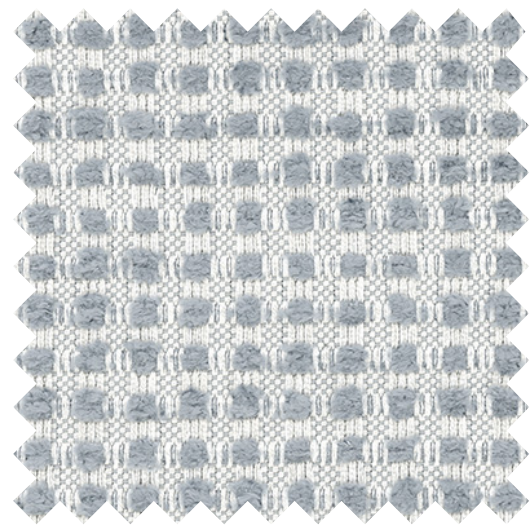
34126 - 511



4191 - 21



4182 - 101



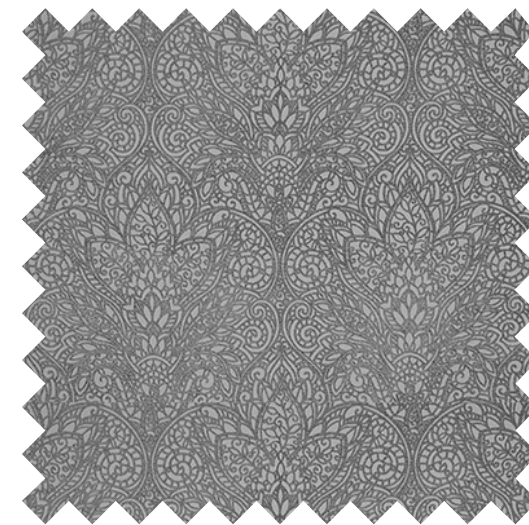
32012 - 1611



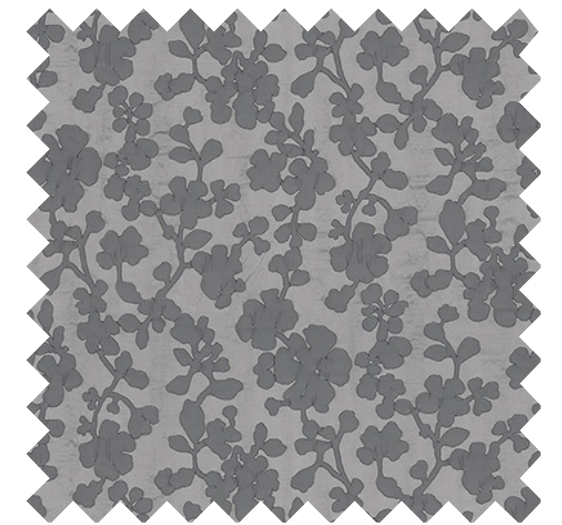
34167 - 15



34141 - 11



34117-11



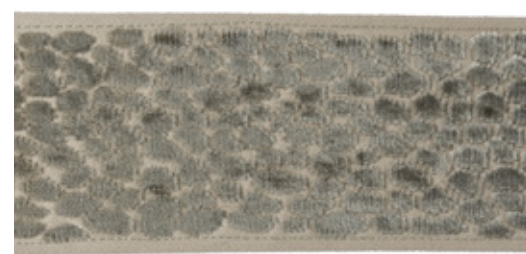
3548 - 1121



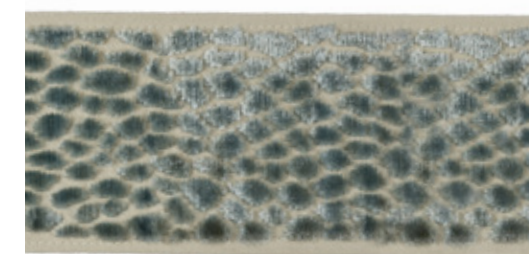
T30743 - 1



T30746 - 1



T30746 - 106



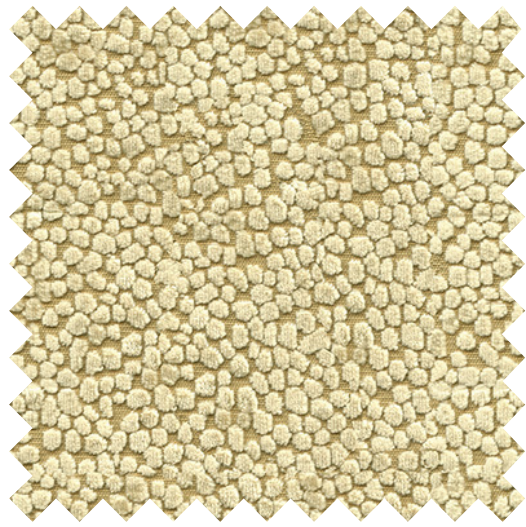
T30746 - 35



T30743 - 113



*“The soft and muted, stone, sea and sky tones all comes together to create a space that feels very calm and serene – elegant, but with a sense of ease.”*



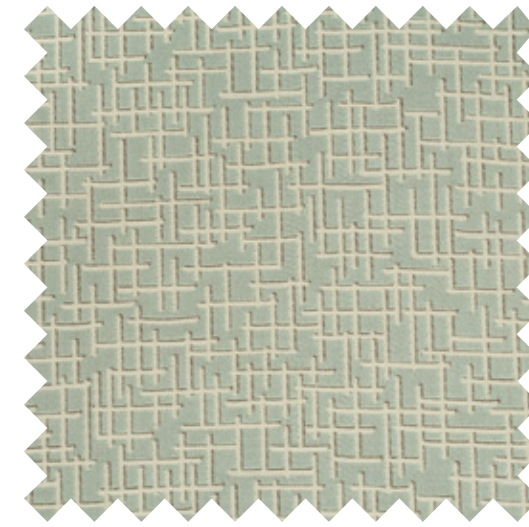
34131 - 16



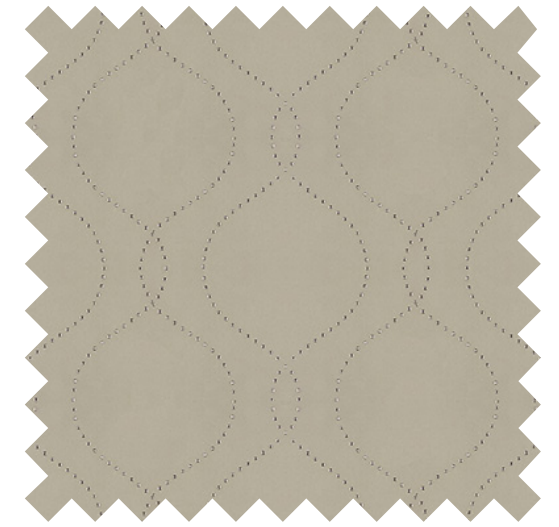
34161 - 101



34136 - 11



34156 - 135



4197 - 16



31974 - 11



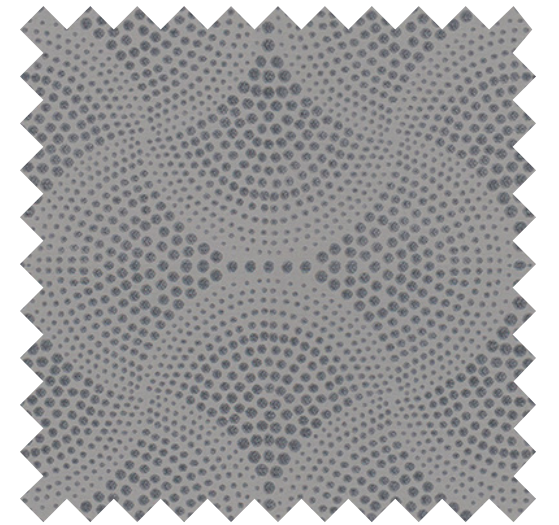
4196 - 1611



34127 - 15



31966 - 1516



34119 - 11



T30743 - 416



T30744 - 414



T30744 - 135



T30744 - 115



T30743 - 115





Wallpaper: W3356-1611, Drapery panels: 4192-16, Trim: T30745-16; Navarre Tall Chairs B203PN, Backrest and seat cushion fabric: 3548-116, Outside back and arm fabric: 34122-1, Pillows on chairs left to right: 34156-616, 34165-1511, Trims: T30743-135 & T30743-818; Jazz Sofa D220 EXT E 73 CH, Fabric: 34174-161, Bolster pillows: 34131-16, Side pillows: 34163-1516, Center pillow: 34156-135; Soledad Bench B829, Fabric: 34138-135; Lafayette Accent Table OTP103; Walnut and Acrylic Cocktail Table OT850; Carpet: Mura Topaz.



Wallpaper: W3369-21; Drapery panels: 4191-16 Trim: T30746-1; Arcadia Sofa AS6600-1, Fabric: 34161-101, Side pillows: 34156-616, Center pillows: 34122-11 Trim: T30745-15, Middle pillow: 34123-1; Montebello Chair AS630, Fabric: 29582-101 with piping Bryce-1, Pillow: 34117-11; Ottoman fabric: Zuma-1611; Latour Dining Chair FS42S, Fabric: 34122-21; Chair fabric: 34148-1511; Miguel Side Tables OTH392; Quarter Star Oval 48" Cocktail Table OT855; Carpet: Mani Platinum, Area rug: Arista Mercury.



Wallpaper: W3356-1611; Drapery panels: 4192-16, Trim: T30745-16; Chair fabric: 34163-1516, Pillow: 34131-16; Alhambra Sofa AS6400-1, Fabric: 34129-11, Pillows left to right: 34161-101, 31974-106, Trim: T30745-11, 34156-616; Remy 46in Buffet WSB46 DD Greene Accent Table OTP104; Carpet: Shimmer Ivory.



Wallpaper: W3369-21, Bellflower Sofa AS6200-1, Fabric: Bryce -1; Pillows left to right: 34156-616, Trim: T30746-1, 34132-516, Trim: T30745-15, 34117-11; Bongo Drum OT901.



Wallpaper: W3369-21; Screen fabric: 32012-1611, Trim: T30743-115; Monaco Side Chairs H3810-D, Outside back fabric: Arches -11, Inside back & seat fabric: 34132-4; Bellflower Sofa AS6200-1, Fabric: Bryce-1, Side pillows: 34117-11 Center Pillows: 34156-616, Trim: T30746-1; Grand Pedestal Dining Table WD8/48RD IWP CX.



For the complete Candice Olson collection, visit [kravet.com](http://kravet.com).

kravet® US 800 645 9068 CAN 800 535 3258 UK +44 (0) 1202 266 995 MX 01 (800) 777-1569 [CuratedKravet.com](http://CuratedKravet.com)