

PARISH HADLEY

SINCE 1823

LEE JOFA

PARISH HADLEY



Parish-Hadley Associates set the standard for American style in some of the finest homes in the United States and Europe from the 1960s through the 1990s. 'Sister' Parish, noted for her innate sense of color, luxury and romance, and Albert Hadley, known for his architectural knowledge and love of sleek modernism, used unexpected furniture silhouettes and combinations of textiles including classic chintzes, modern graphic prints and sumptuous silks, velvets and weaves. The exclusive Parish Hadley collection of fabric and furniture at Lee Jofa pays tribute to the stylish, multi-faceted designs for which the firm is renowned.



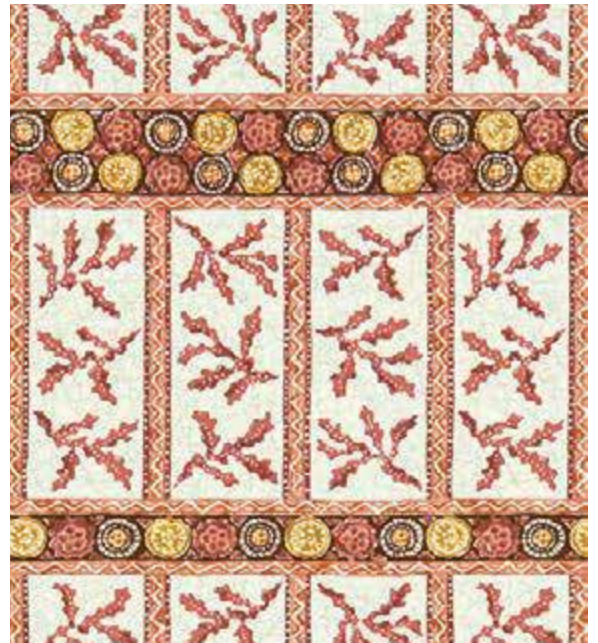






MOZAMBIQUE

During the 1960s, Parish Hadley began introducing ethnic prints into their work. Combining unique patterns with a traditional piece of furniture was the essence of their style.



MOZAMBIQUE • RED

HARRY VELVET

Named for Sister Parish's son, Harry Parish, this ikat design was inspired by a vintage silk he brought back from his travels in Russia.



HARRY VELVET • FLAME/GOLD

PRINTS



ALLEGRA LINEN • GREY
ALSO AVAILABLE • GREEN/AQUA



ALLEGRA • BLUES
ALSO AVAILABLE • PINK/GREEN



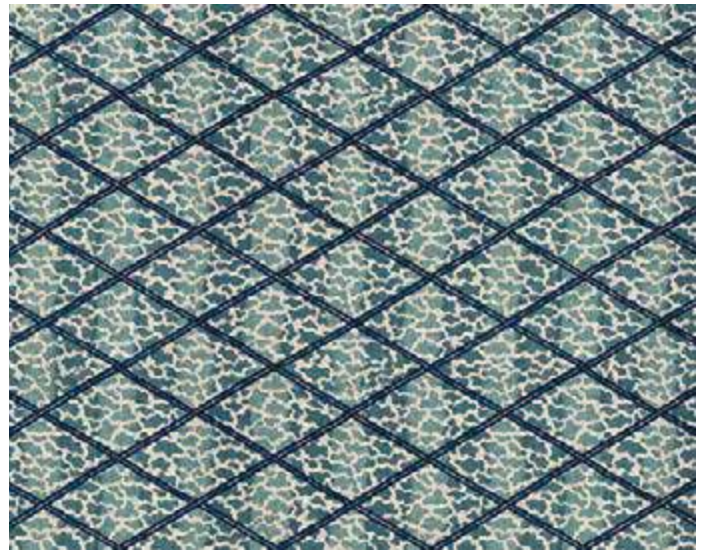
HARRY VELVET • GOLD/GREY
ALSO AVAILABLE • FLAME/GOLD, RUST/EMERALD



HARRY TWILL • BLUE
ALSO AVAILABLE • MULTI



APPLEDORE • SKY
ALSO AVAILABLE • GREY, PEACH, PUTTY



JAG TRELLIS • BLUE
ALSO AVAILABLE • TURQUOISE, RED, GREEN, BROWN

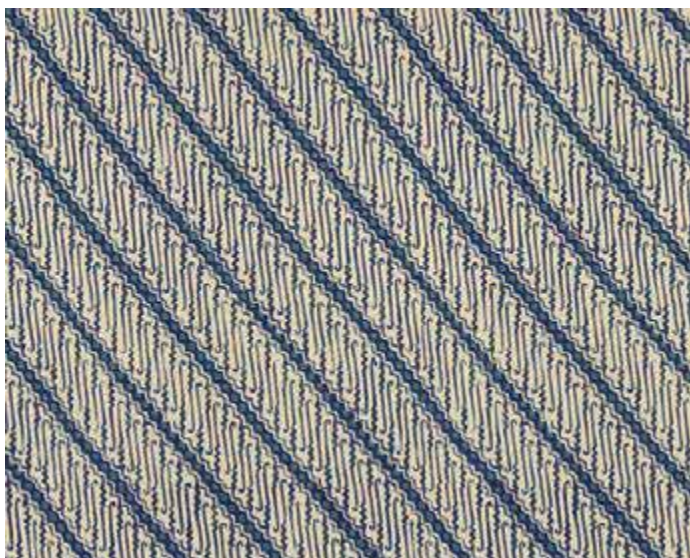
PRINTS



MAISIE • PINK/GREEN
ALSO AVAILABLE • DOCUMENT



MAISIE LINEN • TAN/LEAF



MINGO • BLUE
ALSO AVAILABLE • RED, CHARCOAL, BROWN



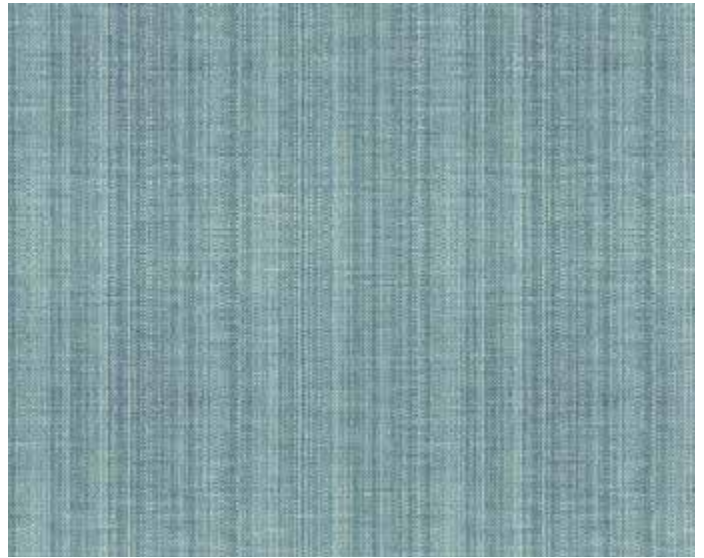
MOZAMBIQUE • BLUE
ALSO AVAILABLE • BROWN, RED, AQUA



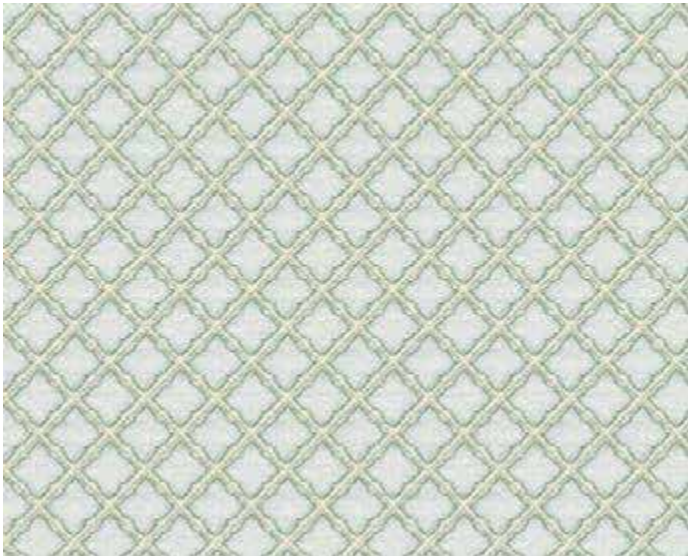
WEAVES



DRAPER STRIPE • PETAL
ALSO AVAILABLE • JEWEL



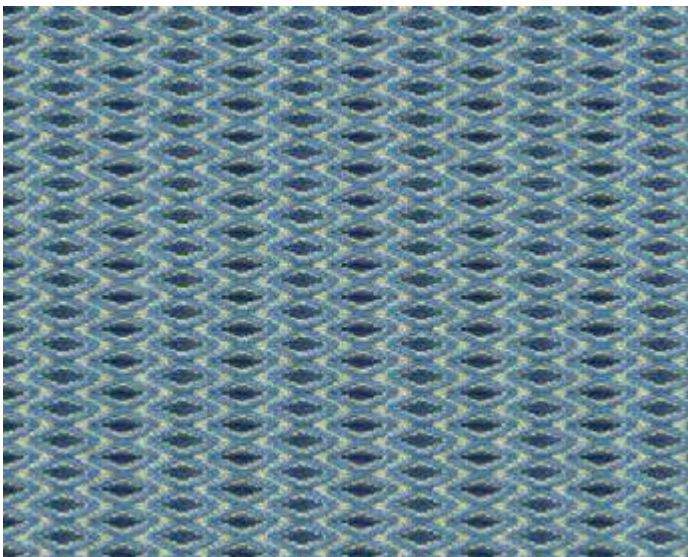
FRANCIS STRIE • BLUE
ALSO AVAILABLE • PEARL, SAND, PETAL, APRICOT,
TEAL, JADE, GRASS, GRANITE



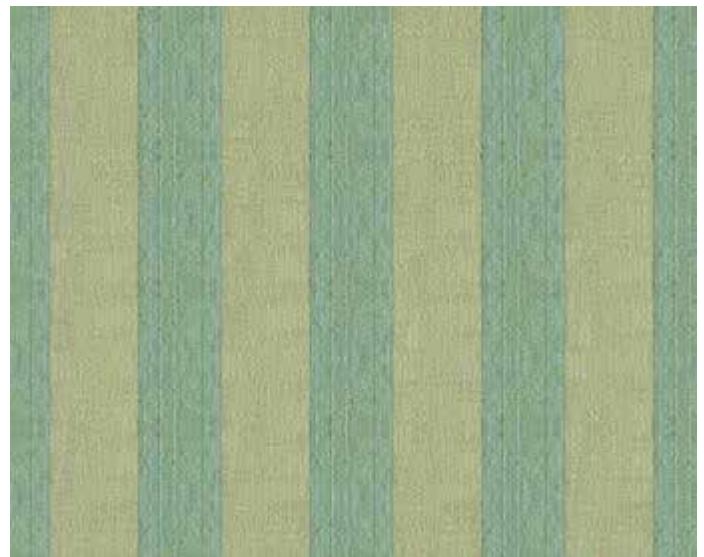
LARKSPUR • MIST
ALSO AVAILABLE • BEIGE, FLINT, PETAL



LE GRENATE • SEA
ALSO AVAILABLE • CRÉME, MAIZE, CORAL, MEADOW, GRANITE

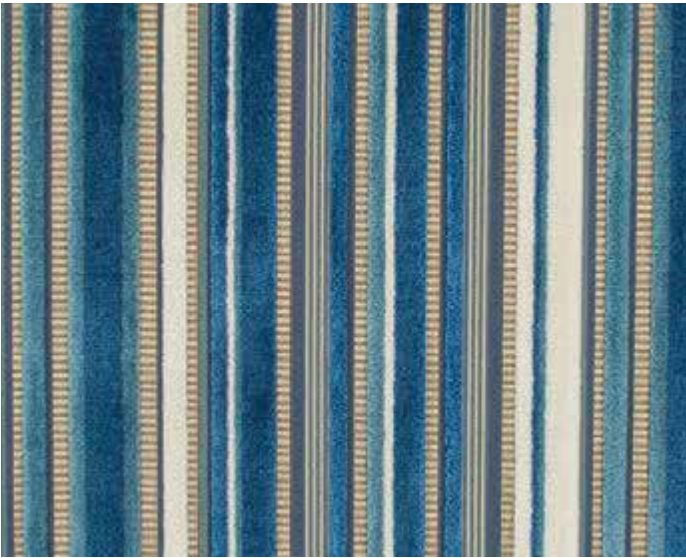


OTTO TRELLIS • BLUE/NAVY
ALSO AVAILABLE • SPICE/RED, CLARET/RED, LAGOON/TEAL

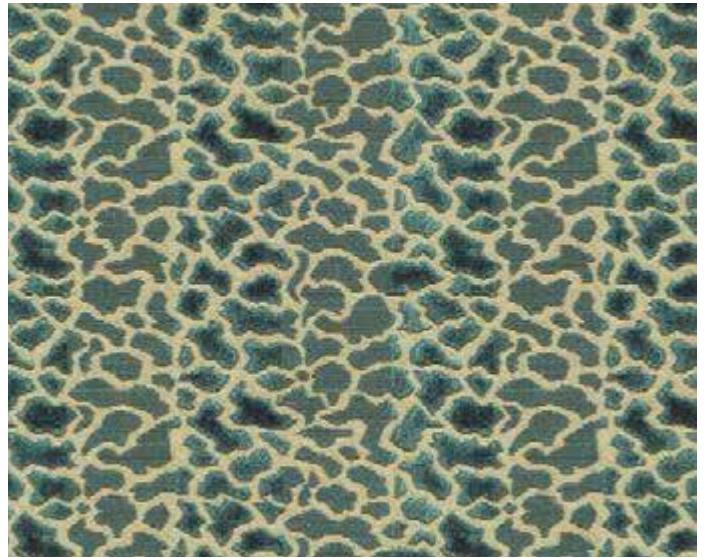


PENOBSCOT • LAGOON
ALSO AVAILABLE • IVORY, BEIGE, DOVE

WEAVES



RHINELANDER 4 • BLUE/IVORY
ALSO AVAILABLE • PETAL/JADE, CAMEL/LEAD



TIMBUKTU VELVET • BLUE
ALSO AVAILABLE • RED, BROWN, LEAF



PARISH HADLEY

The Parish Hadley furniture collection includes unique silhouettes inspired by the firm's most notable custom pieces from the mid-1970s, perfectly suited to complement the clean, modern lines seen in the sophisticated homes of today. Each piece is individually bench made by skilled craftsman to ensure the luxurious and timeless quality of Lee Jofa furniture.



GETTY SOFA



MELLON SLIPPER CHAIR



DAVIS SOFA

FRONT COVER: DRAPERY PANELS: MINGO IN BROWN; DAVIS SOFA HB7201-7, FABRIC: FRANCIS STRIE IN PEARL; PILLOWS: JAG TRELIS IN BROWN, TRIM: PENCIL LINE IN JAVA, HARRY VELVET IN FLAME/GOLD, TRIM: OLIVIA CD W/ FLAN IN DARK CHOCOLATE, PAINTING BY WALTER DARBY BANNARD, COURTESY OF BERRY CAMPBELL; **PAGE 2-3:** SOFA: GETTY SOFA HB7300-7, FABRIC: LE GRENATE IN MAIZE; PILLOWS: LE GRENATE IN MAIZE, DRAPER STRIPE IN PETAL, TIMBUKTU VELVET IN BLUE; CHAIR: TRENT CHAIR H4222-20, FABRIC: MAISIE IN PINK/GREEN, TRIM: EASY BORDER IN DAHLIA; TABLES: WRAPPED WALNUT TRIM TABLE AL1045, HOLLAND & COMPANY FINLAY SIDE TABLE IN CHERRY #179, CHELSY SIDE TABLE OP2000; LAMP: BUNNY WILLIAMS HOME MARBLEIZED LAMP IN RED BLH1113; RUG: GREVIN IN CAMEL; **PAGE 4-5:** DRAPERY PANELS: MINGO IN BROWN; DAVIS SOFA HB7201-7, FABRIC: FRANCIS STRIE IN PEARL; PILLOWS: JAG TRELIS IN BROWN, TRIM: PENCIL LINE IN JAVA, HARRY VELVET IN FLAME/GOLD, TRIM: OLIVIA CD W/ FLAN IN DARK CHOCOLATE; TABLES: SANTA BARBARA SIDE TABLE TWO TIER PLYNTH MOTIF, SANTA BARBARA SIDE TABLE ONE TIER MOTIF BOTH BY ELLE & MARKS, LEE JOFA WATSON COCKTAIL TABLE; CHAIRS: MELLON SLIPPER CHAIRS, FABRIC: MOZAMBIQUE IN RED; ROBERT SADDLE BENCH, FABRIC: OTTO TRELIS IN CLARET/RED; PAINTING BY WALTER DARBY BANNARD, COURTESY OF BERRY CAMPBELL; LAMPS: BUNNY WILLIAMS HOME CHICKEN FEATHER LAMPS IN BROWN; CARPET: RUSSBRIDGE IN TRAVERTINE; **PAGE 7:** DRAPERY PANELS: MINGO IN BROWN; CHAIRS: MELLON SLIPPER CHAIRS, FABRIC: MOZAMBIQUE IN RED; PILLOW: OTTO TRELIS IS CLARET/RED; CARPET: RUSSBRIDGE IN TRAVERTINE; **PAGE 9:** SOFA: GETTY SOFA HB7300-7, FABRIC: LE GRENATE IN MAIZE; PILLOWS: TIMBUKTU VELVET IN BLUE, DRAPER STRIPE IN PETAL, LE GRENATE IN MAIZE; LAMP: BUNNY WILLIAMS HOME MARBLEIZED LAMP IN RED BLH1113.