



CARY CLUB CHAIR & OTTOMAN DG-50551 | DG-50552

Luxurious and elegant, Cary is the masculine partner to the graceful and feminine Lana Chair. Cary makes an impression in its strong lines and, like all Donghia pieces, offers unparalleled comfort and quality.

Fully upholstered club chair with square seaming detail and shallow tufting on tight seat and back. Maple plinth base in Brown Mahogany is standard. Available option of swivel base with upcharge.

Fully upholstered ottoman with square seaming detail and shallow tufting on a tight seat. Comes standard without welt on a concealed maple wood base finished in Brown Mahogany.

D O N G H I A

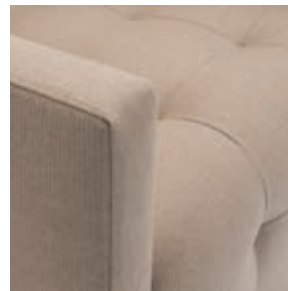


DG-50551 CARY CLUB CHAIR

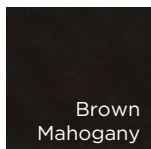
28.5"W x 32.5"D x 32.25"H
17.5"SH, 21"SD, 24"AH
COM: 7 Yards 54" Plain Goods
COL: 126 Sq. Ft. Leather

DG-50552 CARY OTTOMAN

23.5"W x 18"D x 17"H
COM: 2.5 Yards 54" Plain Goods
COL: 45 Sq. Ft. Leather



STANDARD MAPLE WOOD FINISH



Brown
Mahogany

D O N G H I A