

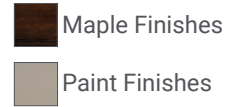
## Tailor Chaise

### DSCH/61

OVERALL: 30W x 61D x 32H  
 SEAT: 46D 18H  
 ARM: 24H  
 INSIDE: 23W

ARM: 5A Track with T-Cushion  
 BACK: 8B Straight Border  
 BASE: 18C Wood Ledge  
 TRIM: Simple Seam

### FINISHES

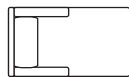


YARDAGE: 15 (54" Wide, Plain)  
 OPTIONS: Arm, Back, Base and Trim

Also Available: Sofas, Sectionals, Chaises, Chair & Ottoman  
 Available By the Inch  
 Custom Inquiries Invited



\*5" arms will add 3" to overall width.



*these pieces coordinate with 37" deep frames because of depth and arm length*

- DSCH/58 Chaise  
 OW: 30"  
 OD: 58"  
 SD: 43"  
 IW: 23"

*these pieces coordinate with 40" deep frames because of depth and arm length*

- DSCH/61 Chaise  
 OW: 30"  
 OD: 61"  
 SD: 46"  
 IW: 23"

Tailor Options

ARMS



3A English with T-Cushion  
OW: 5"



4A Track to Front\*  
OW: 3.5"



4A-N Track to Front with Nails\*  
OW: 3.5"



5A Track with T-Cushion  
OW: 3.5"



5A-N Track with T-Cushion & Nails  
OW: 3.5"



8A Sock to Front\*  
OW: 5"



9A Sock with T-Cushion  
OW: 5"



10A Square to Front\*  
OW: 5"



11A Square with T-Cushion  
OW: 5"



14A Key to Front\*  
OW: 5"



15A Key with T-Cushion  
OW: 5"



16A Slope to Front\*  
OW: 3.5"



17A Slope with T-Cushion\*\*  
OW: 3.5"

\*Seat cushion to front arms not available on Two Arm Chaise.  
\*\*ARM 17A not available with T Back Cushion.

BACKS BH: 31" or 35"



8B Straight Border  
OH: 32"

8BH OH: 36"



9B T-Border  
OH: 32"

9BH OH: 36"



10B Straight Knife Edge  
OH: 32"

10BH OH: 36"



11B T-Knife Edge  
OH: 32"

11BH OH: 36"



12B Lawson Tight  
OH: 31"

12BH OH: 35"



13B Lawson Tight with Kidney  
OH: 31"  
\*On 40" OD only

13BH OH: 35"  
\*On 40" OD only



14B Channel Tight  
OH: 31"

14BH OH: 35"

**Tailor Options**

**BASES** \*Swivel available with either Kick Pleat Skirt or Base to Floor. Base to Floor will be set 2" off floor for Swivel and 3" for Swivel Glider.



12C Turned\*  
OH: 5"



13C Platform  
OH: 5"



14C Square Taper\*  
OH: 5"



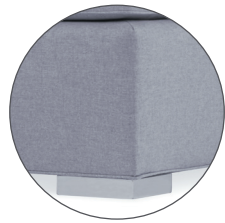
16C Base To Floor  
OH: 1.5"  
Hover Foot



17C Waterfall Skirt



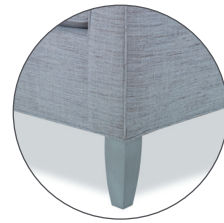
18C Wood Ledge  
OH: 1.5"



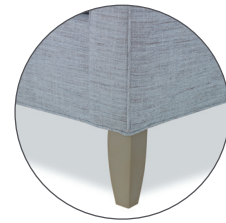
19C Chrome Ledge  
OH: 1.5"



24C Plinth Base  
OH: 1.5"



25CN Metal Nickel  
OH: 5"



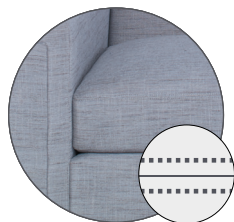
25CB Metal Brass  
OH: 5"

5" Legs not available on Sleepers.

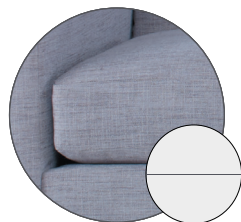


\*Curved Fender available on Turned 12CC and Square Taper Legs 14CC (NA on ottomans).

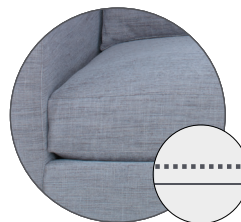
**TRIM**



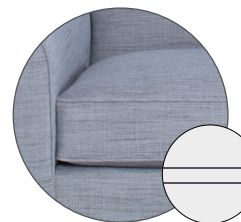
Baseball Stitch



Simple Seam



French Seam



Bias Welt

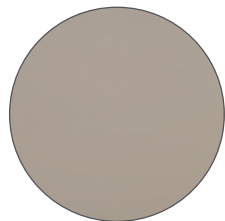


Trim Cord with Lip  
\*Additional

**FINISHES**



Maple Finishes



Paint Finishes

**YARDAGE**

Due to custom nature please contact sales for yardage requirements.