

Smith Benches

SB42 BT SR FL

Bench 42"
 Biscuit Tuft Top - Single Row Nails -
 Floor Recessed Casters
 OVERALL: 42W x 22D x 19H






YARDAGE: 5.5 (54" Wide, Plain)
 OPTIONS: Top, Trim & Base Options
 Cedar Lined Interior (Additional)

Available by the Inch
 Custom Inquiries Invited

FINISHES

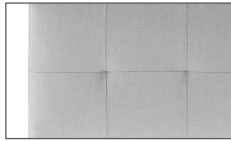
-  Maple Finishes
-  Paint Finishes



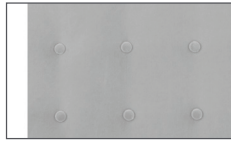
					
Leg / Base	<input type="radio"/> SB22 OW: 22"	<input type="radio"/> SB36 OW: 36"	<input type="radio"/> SB42 OW: 42"	<input type="radio"/> SB50 OW: 50"	<input type="radio"/> SB60 OW: 60"
Skirt	<input type="radio"/> SB22D OW: 22"	<input type="radio"/> SB36D OW: 36"	<input type="radio"/> SB42D OW: 42"	<input type="radio"/> SB50D OW: 50"	<input type="radio"/> SB60D OW: 60"

Smith Standard Options See pages 176-177 for yardage.

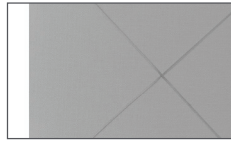
Bench Top Treatments



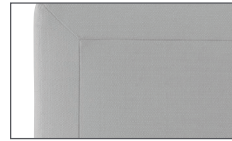
BT • Biscuit Tuft



BP • Button Pull



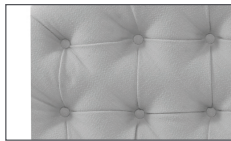
MT • Mitered



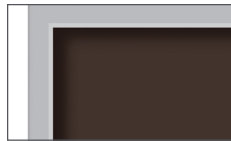
PF • Picture Frame



PL • Plain
Seams on 48" or Larger
Suggest Railroad



TF • Tufted



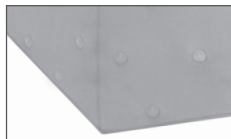
TT • Inset Fixed Tray

Bench Trim Treatments

Note #9 Nails Only



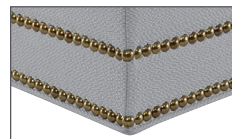
BD • Beaded Molding



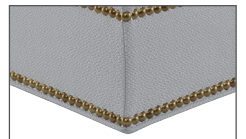
BS • Button Pull



CM • Channel Molding



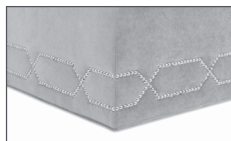
DB • Double Row Nails
2.75"



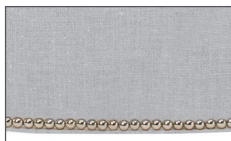
DW • Double Wide Nails
4"



NO • No Trim



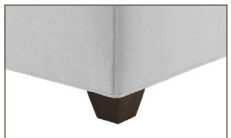
RB • Ribbon Nails



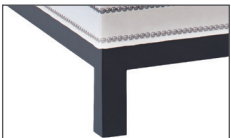
SR • Single Row Nails

Ottoman Base Treatments

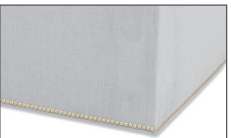
*Bracket Base not available with Molding Trim Treatments



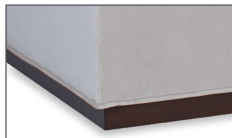
AL • Angled Leg



BB • Bracket Base*



FL • Floor with
Recessed Casters
FLF • Floor with Feet



PB • Plinth Base
1.75"



TP • Taper Leg*



MB • Metal Brushed
Brass Leg*



MN • Metal Nickel Leg*



MK • Metal Black Leg*