

**LEE JOFA**  
 FURNITURE  
 WORKROOM  
 CHAIRS AND OTTOMANS



**CHAIR & OTTOMAN AS SHOWN**

ARM **LS** • Panel Arm, Seat Cushion to Front  
 BACK **KE** • Knife Edge Back  
 SKIRT **DSW** • Waterfall Skirt  
 SWIVEL STYLE JF36S40 LS KE DSW  
 OPTIONS *Widths, Depths, Arms, Backs, Legs or Skirts*  
 OTTOMAN  
 STYLE JF28-O DSW  
 OPTIONS *Widths, Depths, Legs or Skirts*

OW 34 OD 40 OH 35.5 SD 19 SH 20.5 AH 25.5 IW 22

Custom Sizing Available



OW 28.5 OD 20.5 OH 19

Custom Sizing Available



## SOFA, LOVESEAT and CHAIR

Actual widths will vary based upon exact arm width, fabric selection and industry standard tolerances.



### LOVESEAT JF58

37"D | JF5837  
40"D | JF5840  
43"D | JF5843

OW/IW = 60"/44"  
ARMS LPL, LPN

OW/IW = 58"/44"  
ARMS DS, LS, LT, SS, ST

OW/IW = 56"/44"  
ARMS ET, ME, TF5, TT5

OW/IW = 54"/44"  
ARMS HE, SA, TF, TT

### LOVESEAT JF64\*

37"D | JF6437  
40"D | JF6440  
43"D | JF6443

OW/IW = 66"/50"  
ARMS LPL, LPN

OW/IW = 64"/50"  
ARMS DS, LS, LT, SS, ST

OW/IW = 62"/50"  
ARMS ET, ME, TF5, TT5

OW/IW = 60"/50"  
ARMS HE, SA, TF, TT

\*Standard with two seats



### SOFA JF76

37"D | JF7637  
40"D | JF7640  
43"D | JF7643

OW/IW = 78"/62"  
ARMS LPL, LPN

OW/IW = 76"/62"  
ARMS DS, LS, LT, SS, ST

OW/IW = 74"/62"  
ARMS ET, ME, TF5, TT5

OW/IW = 72"/62"  
ARMS HE, SA, TF, TT

### SOFA JF82

37"D | JF8237  
40"D | JF8240  
43"D | JF8243

OW/IW = 84"/68"  
ARMS LPL, LPN

OW/IW = 82"/68"  
ARMS DS, LS, LT, SS, ST

OW/IW = 80"/68"  
ARMS ET, ME, TF5, TT5

OW/IW = 78"/68"  
ARMS HE, SA, TF, TT



### EXTENDED SOFA JF88

37"D | JF8837  
40"D | JF8840  
43"D | JF8843

OW/IW = 90"/74"  
ARMS LPL, LPN

OW/IW = 88"/74"  
ARMS DS, LS, LT, SS, ST

OW/IW = 86"/74"  
ARMS ET, ME, TF5, TT5

OW/IW = 84"/74"  
ARMS HE, SA, TF, TT



### CHAIR JF36

37"D | JF3637  
40"D | JF3640  
43"D | JF3643

OW/IW = 38"/22"  
ARMS LPL, LPN

OW/IW = 36"/22"  
ARMS DS, LS, LT, SS, ST

OW/IW = 34"/22"  
ARMS ET, ME, TF5, TT5

OW/IW = 32"/22"  
ARMS HE, SA, TF, TT



### SWIVEL • SWIVEL GLIDER JF36S • JF36SG

37"D | JF36S37 • JF36SG37  
40"D | JF36S40 • JF36SG40  
43"D | JF36S43 • JF36SG43

OW/IW = 38"/22"  
ARMS LPL, LPN

OW/IW = 36"/22"  
ARMS DS, LS, LT, SS, ST

OW/IW = 34"/22"  
ARMS ET, ME, TF5, TT5

OW/IW = 32"/22"  
ARMS HE, SA, TF, TT

Swivel Glider available with skirt only.

## SOFA, LOVESEAT and CHAIR DEPTH



37"OD - 19"SD



40"OD - 22"SD



43"OD - 25"SD

The following dimensions apply to all of our standard frames:  
Overall Height = 35.5", Seat Height = 20.5", Arm Height = 24"- 25.5"

## OTTOMAN



### OTTOMAN JF28-O

OW = 28.5"  
OD = 20.5"  
OH = 19"



## TWO ARM CHAISE

Actual widths will vary based upon exact arm width, fabric selection and industry standard tolerances.



### TWO ARM CHAISE JF-CHS

68"D | JF-CHS/68  
71"D | JF-CHS/71

OW/IW = 36"/24"  
ARMS LT, ST, LPL, LPN

OW/IW = 33"/24"  
ARMS ET, TT5, LPL, LPN

OW/IW = 31"/24"  
ARMS TT, LPL, LPN



## CHAISE DEPTHS



68"OD - 50"SD



71"OD - 53"SD



# ARMS



**DS** | SLOPED SOCK ARM WITH SEAT CUSHION TO FRONT\*  
6"OW



**ET** | ENGLISH ARM WITH T SEAT CUSHION  
4.5"OW



**HE** | TAPERED WITH SEAT CUSHION TO FRONT\*  
BS Back only  
Swivel Glider not available  
2.5"OW



**LPN** | LARGE PANEL ARM WITH SEAT CUSHION TO FRONT\*  
8"OW



**LPL** | LARGE PLEATED ARM WITH SEAT CUSHION TO FRONT\*  
8"OW



**LS** | PANEL ARM WITH SEAT CUSHION TO FRONT\*  
6"OW



**LT** | PANEL ARM WITH T SEAT CUSHION  
6"OW



**ME** | MODIFIED ENGLISH ARM WITH SEAT CUSHION TO FRONT\*  
4.5"OW



**SA** | SLOPED TRACK ARM WITH SEAT CUSHION TO FRONT\*  
3.5"OW



**SS** | SOCK ARM WITH SEAT CUSHION TO FRONT\*  
6"OW



**ST** | SOCK ARM WITH T SEAT CUSHION  
6"OW



**TF** | 3" TRACK ARM WITH SEAT CUSHION TO FRONT\*  
3"OW



**TT** | 3" TRACK ARM WITH T SEAT CUSHION  
3"OW



**TF5** | 5" TRACK ARM WITH SEAT CUSHION TO FRONT\*  
5"OW



**TT5** | 5" TRACK ARM WITH T SEAT CUSHION  
5"OW

Arm height is 25.5" for all except English Arm - 24"  
Tapered Arm and all Track Arms - 24.5"

\*Seat cushion to front arms not available on Chaise

# BACKS



**BB** | BUTTON BORDER EDGE BACK / T CUSHION



**BE** | BORDER EDGE BACK / T CUSHION



**BS** | BORDER EDGE BACK / STRAIGHT CUSHION



**KE** | KNIFE EDGE BACK / T CUSHION



**KS** | KNIFE EDGE BACK / STRAIGHT CUSHION



**NB** | BORDERLESS TIGHT BACK / T CUSHION\*



**SB** | BORDER EDGE TIGHT BACK / T CUSHION\*



**SR** | ROLLED TIGHT BACK / T CUSHION\*  
Not available on Sectional

\*Not Available on Wedge

**SKIRTED BASE**



**DSS** | TALL DRESSMAKER SKIRT  
9.5"OH



**DSW** | WATERFALL SKIRT  
SEAT TO FRONT  
12.5" FRONT OH



**DSW** | WATERFALL SKIRT  
T CUSHION  
12.5" FRONT OH

**EXPOSED WOOD LEG WITH SHAPED FENDER**



**ENGLISH LEG**  
3"OW x 6.25"OH

- EAB** | ANTIQUE BRASS CASTER
- EBN** | BRUSHED NICKEL CASTER
- ELN** | NO CASTER



**TRADITIONAL LEG**  
3"OW x 6"OH

- RAB** | ANTIQUE BRASS CASTER
- RBN** | BRUSHED NICKEL CASTER
- RLN** | NO CASTER (3"OW x 5.5"OH)



**SPIRAL LEG**  
3.5"OW x 6.25"OH

**SLN**



**TAPERED LEG**  
2.5"OW x 6.25"OH

- TAB** | ANTIQUE BRASS CASTER
- TBN** | BRUSHED NICKEL CASTER
- TLN** | NO CASTER



**TSB** | BRONZE SABOT

**TSN** | NICKEL SABOT

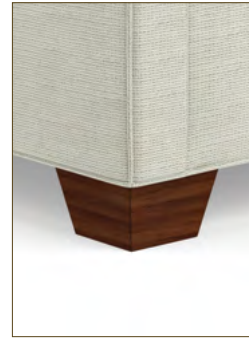


**EXPOSED WOOD LEG WITH STRAIGHT FENDER**



**MODERN LEG**  
2.25"OW x 3.5"OH

- ML** | NO SABOT
- MB** | BRONZE SABOT
- MN** | NICKEL SABOT



**TAPERED BLOCK LEG**  
4"OW x 3.5"OH  
**TB**



**RIBBED BLOCK LEG**  
7"OW x 2"OH  
**RB**

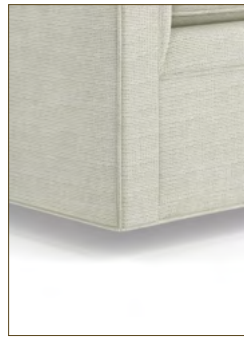


**REEDED BUN LEG**  
7"OW x 3.5"OH  
**BR**

**TO THE FLOOR WITH STRAIGHT FENDER**



**PLAIN BLOCK LEG**  
7"OW x 2"OH  
BULLNOSE  
**BP**



**UPHOLSTERED BASE**  
2" OFF THE FLOOR  
**BF**



**PLINTH BASE**  
2.5" OFF THE FLOOR,  
INSET 1" FROM EDGES  
**PB\***



SHAPED FENDER



STRAIGHT FENDER

\*Not available on Corner Chair, Wedge

# DECORATIVE OPTIONS

## FABRIC

KRAVET  
GRADED FABRIC

LEE JOFA  
FABRIC

BRUNSCHWIG  
& FILS  
FABRIC

DONGHIA  
FABRIC

LEE JOFA  
LEATHER

COM/COL

## TRIM (Must Specify One)



### WELTED

1/4" AROUND FRAME  
AND CUSHIONS



### WELTLESS

SIMPLE SEAM WITH SINGLE WELT  
AROUND BASE



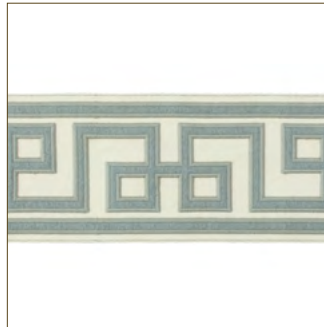
### BASEBALL STITCH

SIMPLE SEAM, DOUBLE TOP STITCHED  
WITH SINGLE WELT AROUND BASE



### FRENCH SEAM

INVERTED SEAM, TOP STITCHED  
WITH SINGLE WELT AROUND BASE



### DECORATIVE TRIMMINGS

\*ADDITIONAL

## BORDER • NOT APPLICABLE ON SKIRTS (Must Specify One)



### FRONT BORDER



### FRONT BORDERLESS