



SOFA AS SHOWN

OW 88 OD 43 OH 35.5 SD 25 SH 20.5 AH 25.5 IW 74

Custom Sizing Available

ARM **DS** • Sloped Sock Arm, Seat Cushions to Front
BACK **KE** • Knife Edge Back
LEG **RAB** • Traditional Leg with Antique Brass Caster
STYLE JF8843 DS KE RAB
SEATS/BACKS 3/3
OPTIONS *Widths, Depths, Arms, Backs, Legs or Skirts*

SOFA, LOVESEAT and CHAIR

Actual widths will vary based upon exact arm width, fabric selection and industry standard tolerances.



LOVESEAT JF58

37"D | JF5837
40"D | JF5840
43"D | JF5843

OW/IW = 60"/44"
ARMS LPL, LPN

OW/IW = 58"/44"
ARMS DS, LS, LT, SS, ST

OW/IW = 56"/44"
ARMS ET, ME, TF5, TT5

OW/IW = 54"/44"
ARMS HE, SA, TF, TT

LOVESEAT JF64*

37"D | JF6437
40"D | JF6440
43"D | JF6443

OW/IW = 66"/50"
ARMS LPL, LPN

OW/IW = 64"/50"
ARMS DS, LS, LT, SS, ST

OW/IW = 62"/50"
ARMS ET, ME, TF5, TT5

OW/IW = 60"/50"
ARMS HE, SA, TF, TT

*Standard with two seats



SOFA JF76

37"D | JF7637
40"D | JF7640
43"D | JF7643

OW/IW = 78"/62"
ARMS LPL, LPN

OW/IW = 76"/62"
ARMS DS, LS, LT, SS, ST

OW/IW = 74"/62"
ARMS ET, ME, TF5, TT5

OW/IW = 72"/62"
ARMS HE, SA, TF, TT

SOFA JF82

37"D | JF8237
40"D | JF8240
43"D | JF8243

OW/IW = 84"/68"
ARMS LPL, LPN

OW/IW = 82"/68"
ARMS DS, LS, LT, SS, ST

OW/IW = 80"/68"
ARMS ET, ME, TF5, TT5

OW/IW = 78"/68"
ARMS HE, SA, TF, TT



EXTENDED SOFA JF88

37"D | JF8837
40"D | JF8840
43"D | JF8843

OW/IW = 90"/74"
ARMS LPL, LPN

OW/IW = 88"/74"
ARMS DS, LS, LT, SS, ST

OW/IW = 86"/74"
ARMS ET, ME, TF5, TT5

OW/IW = 84"/74"
ARMS HE, SA, TF, TT



CHAIR JF36

37"D | JF3637
40"D | JF3640
43"D | JF3643

OW/IW = 38"/22"
ARMS LPL, LPN

OW/IW = 36"/22"
ARMS DS, LS, LT, SS, ST

OW/IW = 34"/22"
ARMS ET, ME, TF5, TT5

OW/IW = 32"/22"
ARMS HE, SA, TF, TT



SWIVEL • SWIVEL GLIDER JF36S • JF36SG

37"D | JF36S37 • JF36SG37
40"D | JF36S40 • JF36SG40
43"D | JF36S43 • JF36SG43

OW/IW = 38"/22"
ARMS LPL, LPN

OW/IW = 36"/22"
ARMS DS, LS, LT, SS, ST

OW/IW = 34"/22"
ARMS ET, ME, TF5, TT5

OW/IW = 32"/22"
ARMS HE, SA, TF, TT

Swivel Glider available with skirt only.

SOFA, LOVESEAT and CHAIR DEPTH



37"OD - 19"SD



40"OD - 22"SD



43"OD - 25"SD

The following dimensions apply to all of our standard frames:
Overall Height = 35.5", Seat Height = 20.5", Arm Height = 24"- 25.5"

OTTOMAN



OTTOMAN JF28-O

OW = 28.5"
OD = 20.5"
OH = 19"



TWO ARM CHAISE

Actual widths will vary based upon exact arm width, fabric selection and industry standard tolerances.



TWO ARM CHAISE JF-CHS

68"D | JF-CHS/68
71"D | JF-CHS/71

OW/IW = 36"/24"
ARMS LT, ST, LPL, LPN

OW/IW = 33"/24"
ARMS ET, TT5, LPL, LPN

OW/IW = 31"/24"
ARMS TT, LPL, LPN



CHAISE DEPTHS



68"OD - 50"SD



71"OD - 53"SD



ARMS



DS | SLOPED SOCK ARM WITH SEAT CUSHION TO FRONT*
6"OW



ET | ENGLISH ARM WITH T SEAT CUSHION
4.5"OW



HE | TAPERED WITH SEAT CUSHION TO FRONT*
BS Back only
Swivel Glider not available
2.5"OW



LPL | LARGE PANEL ARM WITH SEAT CUSHION TO FRONT*
8"OW



LPN | LARGE PLEATED ARM WITH SEAT CUSHION TO FRONT*
8"OW



LS | PANEL ARM WITH SEAT CUSHION TO FRONT*
6"OW



LT | PANEL ARM WITH T SEAT CUSHION
6"OW



ME | MODIFIED ENGLISH ARM WITH SEAT CUSHION TO FRONT*
4.5"OW



SA | SLOPED TRACK ARM WITH SEAT CUSHION TO FRONT*
3.5"OW



SS | SOCK ARM WITH SEAT CUSHION TO FRONT*
6"OW



ST | SOCK ARM WITH T SEAT CUSHION
6"OW



TF | 3" TRACK ARM WITH SEAT CUSHION TO FRONT*
3"OW



TT | 3" TRACK ARM WITH T SEAT CUSHION
3"OW



TF5 | 5" TRACK ARM WITH SEAT CUSHION TO FRONT*
5"OW



TT5 | 5" TRACK ARM WITH T SEAT CUSHION
5"OW

Arm height is 25.5" for all except English Arm - 24"
Tapered Arm and all Track Arms - 24.5"

*Seat cushion to front arms not available on Chaise

BACKS



BB | BUTTON BORDER EDGE BACK / T CUSHION



BE | BORDER EDGE BACK / T CUSHION



BS | BORDER EDGE BACK / STRAIGHT CUSHION



KE | KNIFE EDGE BACK / T CUSHION



KS | KNIFE EDGE BACK / STRAIGHT CUSHION



NB | BORDERLESS TIGHT BACK / T CUSHION*



SB | BORDER EDGE TIGHT BACK / T CUSHION*



SR | ROLLED TIGHT BACK / T CUSHION*
Not available on Sectional

*Not Available on Wedge

SKIRTED BASE



DSS | TALL DRESSMAKER SKIRT
9.5"OH



DSW | WATERFALL SKIRT
SEAT TO FRONT
12.5" FRONT OH



DSW | WATERFALL SKIRT
T CUSHION
12.5" FRONT OH

EXPOSED WOOD LEG WITH SHAPED FENDER



ENGLISH LEG
3"OW x 6.25"OH

- EAB** | ANTIQUE BRASS CASTER
- EBN** | BRUSHED NICKEL CASTER
- ELN** | NO CASTER



TRADITIONAL LEG
3"OW x 6"OH

- RAB** | ANTIQUE BRASS CASTER
- RBN** | BRUSHED NICKEL CASTER
- RLN** | NO CASTER (3"OW x 5.5"OH)



SPIRAL LEG
3.5"OW x 6.25"OH

SLN



TAPERED LEG
2.5"OW x 6.25"OH

- TAB** | ANTIQUE BRASS CASTER
- TBN** | BRUSHED NICKEL CASTER
- TLN** | NO CASTER



- TSB** | BRONZE SABOT
- TSN** | NICKEL SABOT

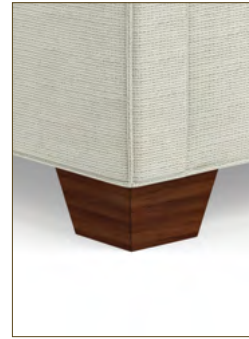


EXPOSED WOOD LEG WITH STRAIGHT FENDER



MODERN LEG
2.25"OW x 3.5"OH

- ML** | NO SABOT
- MB** | BRONZE SABOT
- MN** | NICKEL SABOT



TAPERED BLOCK LEG
4"OW x 3.5"OH
TB



RIBBED BLOCK LEG
7"OW x 2"OH
RB



REEDED BUN LEG
7"OW x 3.5"OH
BR

TO THE FLOOR WITH STRAIGHT FENDER



PLAIN BLOCK LEG
7"OW x 2"OH
BULLNOSE
BP



UPHOLSTERED BASE
2" OFF THE FLOOR
BF



PLINTH BASE
2.5" OFF THE FLOOR,
INSET 1" FROM EDGES
PB*



SHAPED FENDER



STRAIGHT FENDER

*Not available on Corner Chair, Wedge

DECORATIVE OPTIONS

FABRIC

KRAVET
GRADED FABRIC

LEE JOFA
FABRIC

BRUNSCHWIG
& FILS
FABRIC

DONGHIA
FABRIC

LEE JOFA
LEATHER

COM/COL

TRIM (Must Specify One)



WELTED

1/4" AROUND FRAME
AND CUSHIONS



WELTLESS

SIMPLE SEAM WITH SINGLE WELT
AROUND BASE



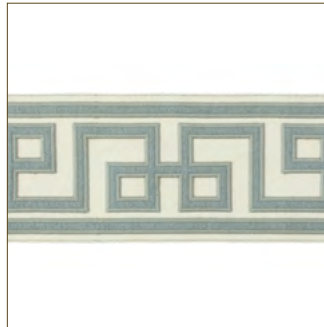
BASEBALL STITCH

SIMPLE SEAM, DOUBLE TOP STITCHED
WITH SINGLE WELT AROUND BASE



FRENCH SEAM

INVERTED SEAM, TOP STITCHED
WITH SINGLE WELT AROUND BASE



DECORATIVE TRIMMINGS

*ADDITIONAL

BORDER • NOT APPLICABLE ON SKIRTS (Must Specify One)



FRONT BORDER



FRONT BORDERLESS